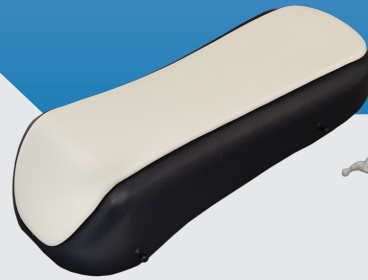




RADIAL RUNWAY

The Radial Runway provides a radiolucent platform that keeps the patient in normal anatomical position for ideal radial access. Disposable straps allow the wrist to be positioned in multiple neutral or extended angles optimizing patient comfort, and the foam pad may be removed from the base at the conclusion of the case. The disposable brace can then be attached to the foam pad, providing support for the patient's wrist during recovery.



Features

- Can be used for radial access on either wrist
- Adjustable straps fit any sized patient
- Disposable straps, foam pad, & brace
- Base can be sterilized and reused
- Keeps patient comfortable during procedure
- Detachable pad with brace remains with patient for recovery
- Anti-skid surface

Item Number	Description	UOM
RRU-0008	Radial Runway - Reusable Base (Non-Sterile)	1 each
RRU-0009	Radial Runway - Disposable Top Pad (Non-Sterile)	Box 10

FIND OUT MORE



tzmedical.com



800.944.0187



info@tzmedical.com

15453 R1.0