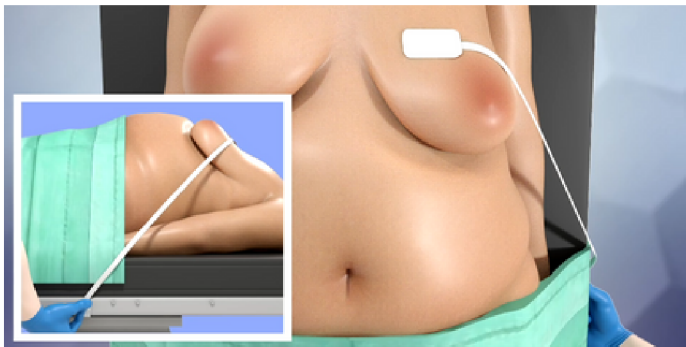
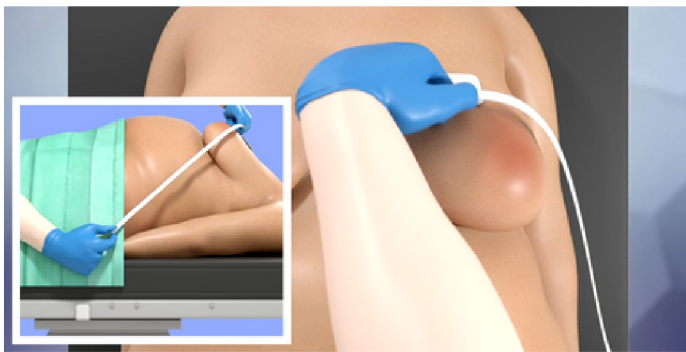
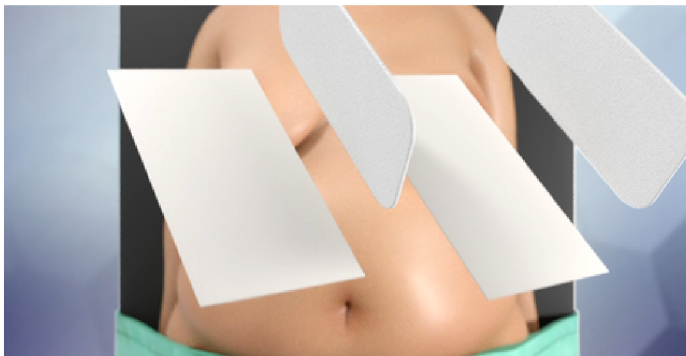




TZ Medical
Sparked by your ideas

PRS-03

Breast Deflection Application & Removal



1

Peel backing from one 2" x 4" adhesive pad and apply it to the upper breast tissue. Ensure that the pad adheres flat against the skin and that there are no bubbles or creases.

2

Peel backing from the second 2" x 4" adhesive pad and adhere the pad to the underside of the table lateral with the patient's navel.

3

Attach one end of the strap, soft side down, to the pad on the patient's breast.

4

Gently pull the opposite end of the strap downward and attach it to the table pad when the desired positioning has been achieved.

5

REMOVAL

Remove the pad slowly and gently from delicate breast tissue. Be sure to support the skin to limit the risk of skin integrity issues.

Note: Kit includes 2 (2" x 4") Pads, 1 (1" x 4") Pad and 1 (1" x 48") Strap. The 1" x 4" pad is not needed for breast deflection and may be discarded.

