



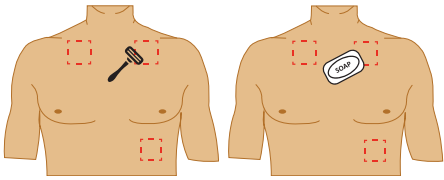
TZ Medical
Sparked by your ideas

PATIENT QUICK START GUIDE

TRIDENT™ NANO 3-LEAD LANYARD CABLE

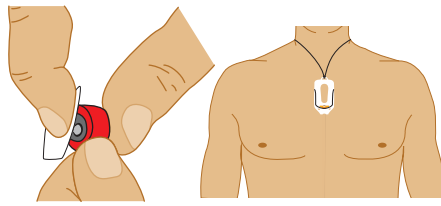
Step 1: Skin Prep

Remove all hair from electrode sites with a razor and scrub the electrode application sites with alcohol wipe, or warm soapy water. Dry area thoroughly.



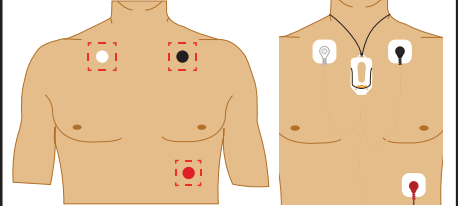
Step 2: Electrodes

Connect color coded snap connectors to the adhesive electrodes. Place lanyard around the neck.



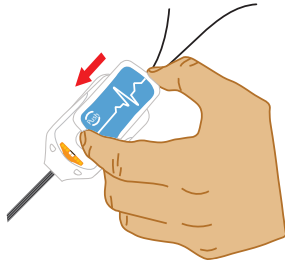
Step 3: Application

Remove backing from the adhesive electrodes and apply to the prepped and dried sites. Make sure to press the border firmly and match the locations shown below.



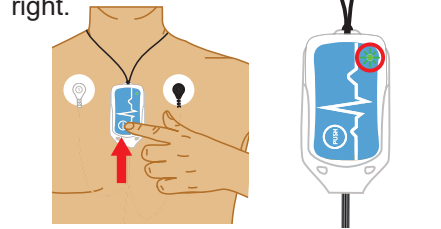
Step 4: Insert Device

Slide the device into the patient lanyard cable. Hold the device in place until the green light turns off.







Step 5: Check Status

Check the recording status by briefly pressing the button. The device will blink 5 times with the color of light indicating the status as shown to the right.



Step 6: Status Lights

<p>Recording</p>  <p>Blinks green 5 times</p>	<p>Electrode has poor connectivity</p>  <p>Blinks yellow 5 times</p>
<p>Recording is complete</p>  <p>Blinks red 5 times</p>	<p>Device requires charging</p>  <p>Blinks green & yellow</p>

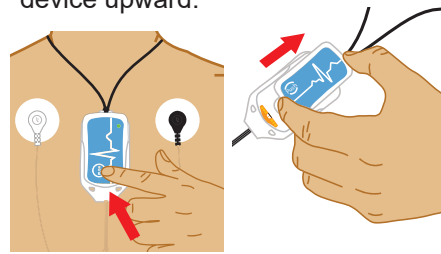
Step 7: Record Event

If you feel a symptom while wearing the monitor, hold the button for 4 seconds to record the event. The light will blink green and an "Event Recorded" tone will play.



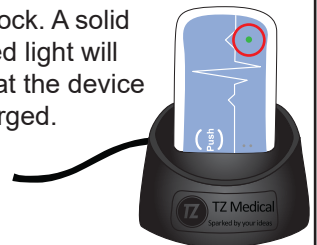
Step 8: Remove Device

Eject the device by firmly pressing the front edge near the status/event button and slide the device upward.



Step 9: Charging

When the device requires charging (alternating G-Y-G-Y-G light), remove the device from the lanyard lead set and insert into the charging dock. A solid green or red light will indicate that the device is fully charged.

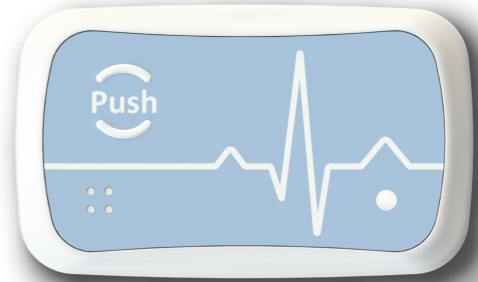


For clinical support, please contact your medical provider.

For technical support related to your cardiac monitoring device, please call **(971) 250-4237** or email

clearbeatsupport@tzmedical.com. Include your name and preferred contact method (phone, email, other), and a support representative will respond as soon as possible.

TRIDENT™ NANO



What you need to know while monitoring...



Avoid exposing the device and lanyard cable lead set to water and/or excessive amounts of moisture. Disconnect all leads from the electrodes adhered to the chest and completely remove the lanyard cable prior to showering. Once the electrodes and surrounding areas are completely dry, place the lanyard around the neck, and reconnect the leads to the electrodes to continue monitoring.



Allow electrode sites to dry completely and remove all residue before applying adhesive electrodes.



It may be difficult to observe the LED while wearing the device. Viewing the LED can easily be done by pressing the button while standing in front of a mirror.



While inserting the recorder, firmly press and hold the exposed edge of the device closest to the LED into the lanyard cable until the green light turns off to ensure the device begins recording properly.



If you need to apply new electrodes for an extended study, recharge the device and repeat the instructions for application.



It is recommended to take a warm shower during the removal process of the electrodes. If available, apply mineral oil as you peel the electrodes away to loosen the adhesive.

EU Customer Notice: "Notice to the user and/or patient: Any incident that has occurred in relation to the device should be reported to the manufacturer and the competent authority of the Member State in which the user and/or patient is established."

